



qvi30 with Tuscan Bar front in Sienna Bronze

The qvi30 direct vent gas insert features a ceramic brick firebox framing the realistic fire with large flames and glowing ember bed. Easy access to controls allows the fan speed, flame appearance, and heat output to be adjusted. Complete the qvi30 with a wide selection of available fronts in a range of styles, finishes, and colors that will complement any décor.

Standard Features

- Large viewing area
- Standing pilot valve system - works in a power outage
- 160 cfm fan kit
- Ultra-Glo ceramic logs
- Herringbone refractory

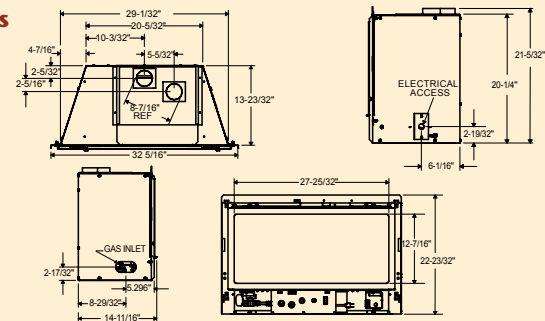
Options

- 6 available fronts
- Various panel sizes
- Adjustable hearth support
- Wall thermostats
- Remote controls

Specifications

Btu/Hour Input (NG)	22,000 - 32,000
Btu/Hour Input (LP)	18,000 - 31,000
Heating capacity*	up to 1,500 sq. ft.
Thermal efficiency	up to 75%
Canadian EnerGuide	47.42% NG

Dimensions



Chapel Hill available in black, hammered pewter and sienna bronze



Affinity Arch available in black only



Tudor Panel available in black, sienna bronze, black with antique pewter accents and sienna bronze with antique copper accents



Tuscan Bar available in black with antique pewter accents and sienna bronze with antique copper accents



Remington available in black, gold and satin nickel.



Front Finishes



Black



Hammered Pewter



Sienna Bronze



Antique Copper



Antique Pewter



Decorative Front available in black only



qvi35 with Affinity Arch front in black

The qvi35 direct vent gas insert offers the look and feel of a real wood fire with ceramic fiber logs and glowing ember bed. With a choice of three decorative fronts and high heat output and efficient advanced flame technology, the qvi35 is an excellent addition to any home.

Standard Features

- Large viewing area
- Standing pilot valve system - works in a power outage
- 160 cfm fan kit
- Ultra-Glo ceramic logs
- Herringbone refractory

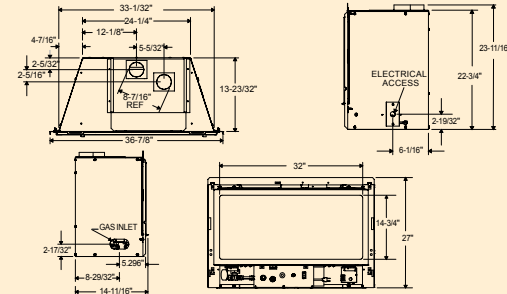
Options

- 3 available fronts
- Various panel sizes
- Adjustable hearth support
- Wall thermostats
- Remote controls

Specifications

Btu/Hour Input (NG)	23,500 - 35,500
Btu/Hour Input (LP)	19,000 - 31,000
Heating capacity*	up to 1,500 sq. ft.
Thermal efficiency	up to 77%
Canadian EnerGuide.....	51.69% NG

Dimensions



Affinity Arch available in black only



Sun Prairie available in black only



Town Square available in black only

IMPORTANT - READ BEFORE INSTALL! Refer to the Owner/Installation Manual for complete clearance requirements and specifications. The images and descriptions in this brochure are provided to assist you in product selection only. Quadra-Fire is a registered trademark of Hearth & Home Technologies. Product specification and pricing subject to change without notice. *Heating capacity rating is to be used as a guideline only. Actual performance may differ slightly due to climate, building construction and condition, amount and quality of insulation, location of the heater, and air movement in the room.

Available from: